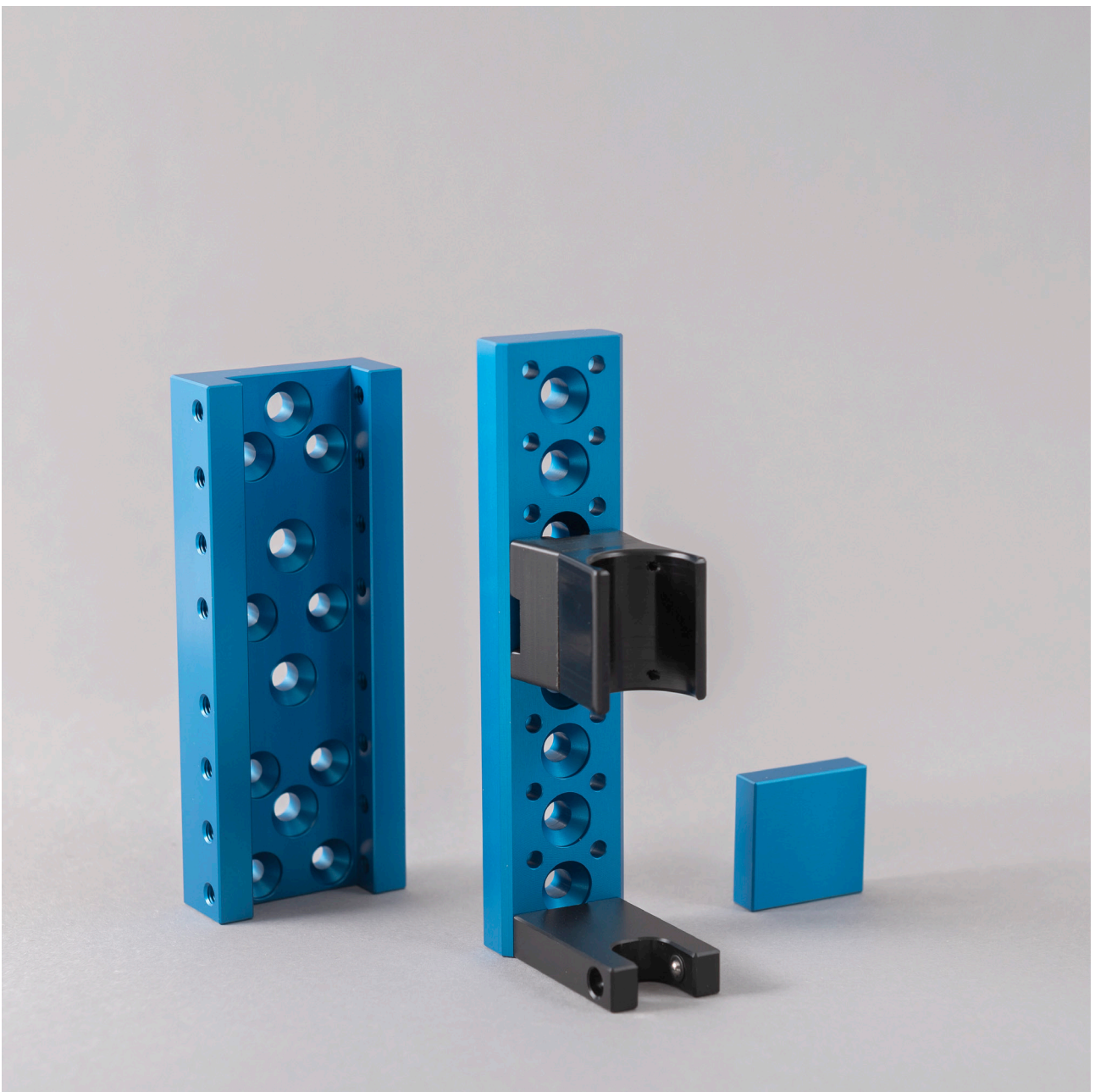


# Assembly



## Assambly

|                               |         |
|-------------------------------|---------|
| Combination examples          | Side 03 |
| Mounting rails                | Side 04 |
| Clamping                      | Side 05 |
| Cartridge holders             | Side 08 |
| Device-specific holders       | Side 09 |
| XYZ support type 30           | Side 10 |
| Mounting systems for robotics | Side 12 |

**For further individual solutions contact S&P!**

## Combination examples

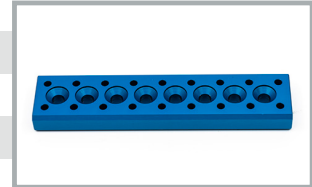


## Mounting rails

Mounting bar

**Article number**

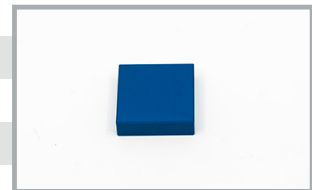
ME3200005



Stop element

**Article number**

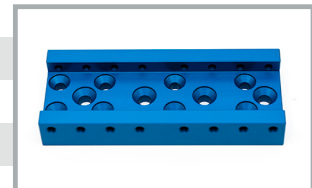
ME3200006



Mounting rail

**Article number**

ME3200010



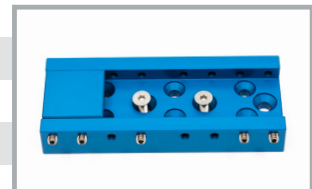
Mounting rail, complete

**Article number**

ME3200013

**described**

Including clamping screws and  
 Stop element



## Clamping

Clamping

**Article number**

**described**

BG3200016

for eco-PEN300 / 330 / 450



Clamping

**Article number**

**described**

BG3200017

for eco-PEN600 / 700



## Clamping

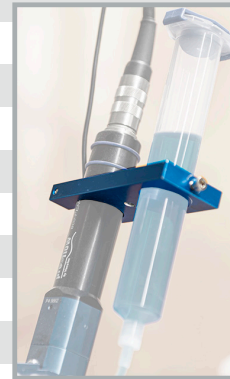
Cartridge holder, eco-PEN300 / 330 / 450

| Article number | described   |
|----------------|---|
| BG3000107      | for fixing 30 /55 cc cartridges on the drive unit |



Cartridge holder, eco-PEN600 / 700

| Article number | described   |
|----------------|---|
| BG3000108      | for fixing 30 /55 cc cartridges on the drive unit |



Clamping adapter

| Article number | described                        |
|----------------|----------------------------------|
| BG3200030      | for motor eco-PEN300 / 330 / 450 |



Clamping adapter

| Article number | described                  |
|----------------|----------------------------|
| BG3200031      | for motor eco-PEN600 / 700 |



## Clamping

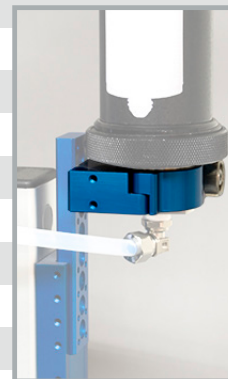
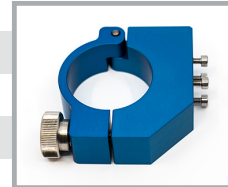
Clamping

**Article number**

BG3200018

**described**

for cartridge sleeve 310 ml aluminium  
with telescopic piston



Clamping

**Article number**

BG3200027

**described**

for pressure vessel large cartridge  
75 cc - 360 cc

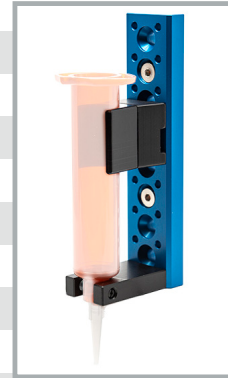




## Cartridge holder

### Cartridge holder

| Article number | size          |
|----------------|---------------|
| BG3000137      | 3 cc          |
| BG3000114      | 5 cc          |
| BG3000110      | 10 cc         |
| BG3000109      | 30 cc / 55 cc |



### Luer-Lock clip

| Article number | described        |
|----------------|------------------|
| BG3200032      | for mounting bar |



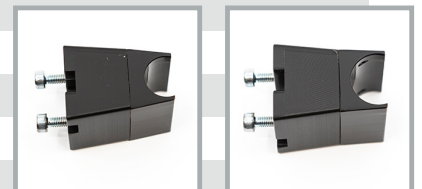
### Luer-Lock clip, INOX

| Article number | described        |
|----------------|------------------|
| BG3200038      | for mounting bar |



### Cartridge clip for beam

| Article number | size          |
|----------------|---------------|
| BG3200033      | 3 cc          |
| BG3200034      | 5 cc          |
| BG3200035      | 10 cc         |
| BG3200036      | 30 cc / 55 cc |



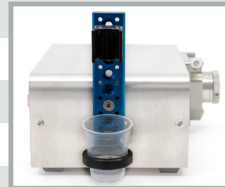


## Device-specific holders

Holder for dosing pen with drip cup holder

**Article number**

BG3250016



Cupholder for mounting bar

**Article number**

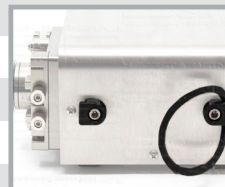
BG3000118



Universal mount for D3PPSD-04

**Article number**

BG3000231



O-ring

**Article number**

BG3000759



## XYZ support type 30

XYZ support type 30

**Article number**

BG100138



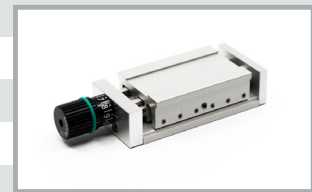
Adjustable slide type 30

**Article number**

BG100023

**described**

Width: 30 mm, Stroke: 10mm



Connection set type 30

**Article number**

BG100024



Connection set type 30

**Article number**

BG100025

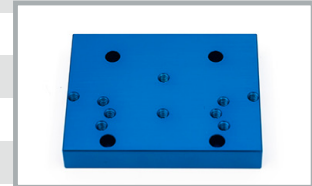


## Accessory

Adapter robot head

**Article number**

ME3200009



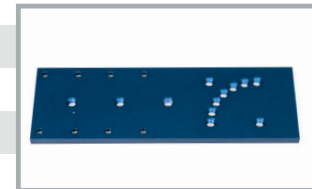
Mounting rail

**Article number**

ME3200020

**described**

Adapter plate XYZ-Support



## Assembly systems for robotics

XYZ mounting kit for TR83X00-06

**Article number**

BG100139



XYZ mounting kit for TR83X00-06

**Article number**

BG100142



Mounting kit for TR83X00-06

**Article number**

BG100144

without XYZ Support

